

Presenting Skool Kampus Towers



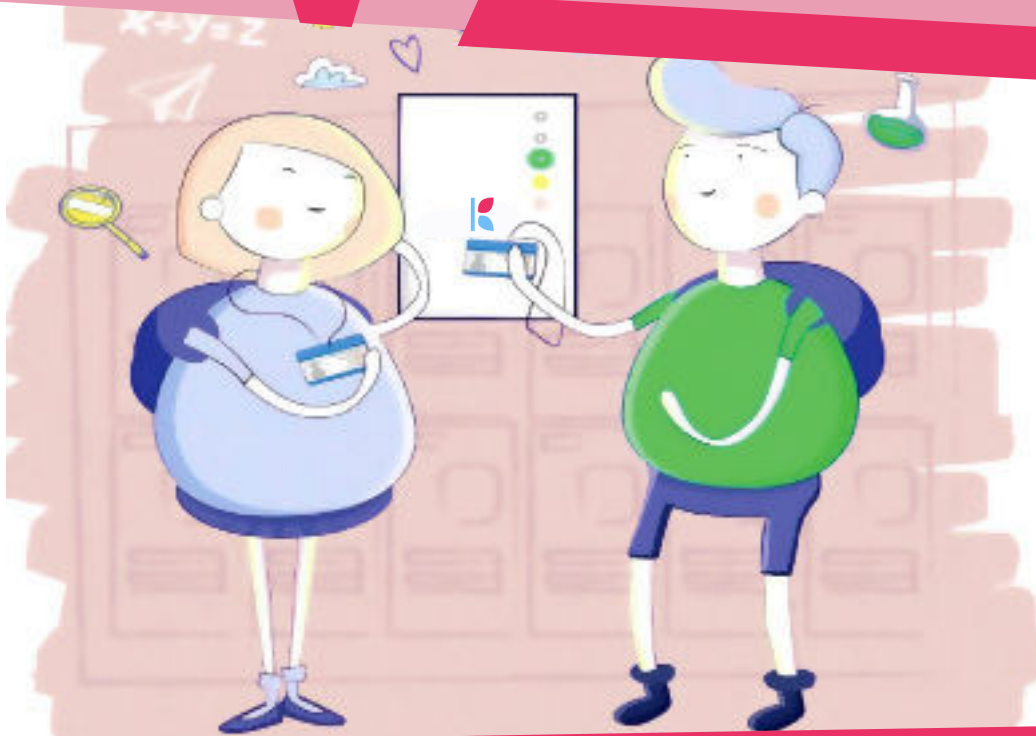
The new age Auto-Attendance saves teachers precious time and alerts parents on pupil's entry and exit in the School

- ✔ When Student walks through the gate, the student's name card is read automatically, and attendance is marked on the software installed on the school's server and an automatic SMS or Push notification is sent to the Parents. There's no need of student swiping his/her name card on the machine.
- ✔ Skool Kampus Towers are designed and tested to be 100% accurate in reading information. Magic doors have a reading speed of less than 0.2 seconds making it a super fast and allows the message to be sent in multiple languages along with the exact time and date when the student walks through the school gates.
- ✔ Using Skool Kampus Towers our School ERP system - Skool Kampus offers a range of solutions including Attendance monitoring solution, Reporting, management of School software and more.
- ✔ Skool Kampus Towers helps in daily, weekly, monthly and yearly attendance reports of each students apart from real time recording and notification so that any anomalies in the attendance can be traced and rectified.
- ✔ Skool Kampus Towers now comes with its own apps for Teachers to show them the accurate attendance of each class.
- ✔ With the superior RFID platform and its own built-in modem & computer, the Skool Kampus Towers communicates with the outside world and helps the School focus more on education instead of giving in precious time for taking manual attendance.
- ✔ It can be used in large schools, nurseries and in schools where attendance issues persist. Use of Skool Kampus Towers has effectively reduced attendance related issues in numerous schools.

*Skool Kampus Towers helps
in daily, weekly, monthly and yearly
attendance reports*



Presenting WALL.E



Wall.E is designed and tested to be 100% accurate in reading information

- ✓ The Wall.E is an innovative RFID attendance reader. For the attendance to be updated in the School application, all the student has to do is show the Student name card, which is equipped with RFID Tag, to the Wall.E device, which then captures the child's personal records, marks the attendance for entry/exit in the application and sends an alert to the parent about the pupil's arrival/departure at the School premise
- ✓ Wall.E offers highest range of readers in the market and also ensures that Student name ID cards are captured from a distance of upto 35 CM's.
- ✓ Using Skool Kampus Wall.E, our School ERP system- Skool Kampus offers a range of solutions including Attendance monitoring solution, Reporting, management of School software and more.
- ✓ Skool Kampus WALL.E helps in daily, weekly, monthly and yearly attendance reports of each students apart from real time recording and notification so that any anomalies in the attendance can be traced and rectified
- ✓ Wall.E helps not just Schools but the Parents in knowing their wards Attendance at the School Wall.E helps not just Schools but the Parents in knowing their wards Attendance at the School
- ✓ It can be used in large schools, nurseries and in schools where attendance issues persist. Use of Skool Kampus Wall.E has effectively reduced attendance related issues in numerous schools.

Trivia : Wall.E stands for

Wall-mounted

Electronic reader

- ✓ With the superior RFID platform and its own built-in modem & computer, the Skool Kampus Wall.E communicates with the outside world and helps the School focus more on education instead of giving in precious time for taking manual attendance.